



StemFit For MSC

Chemically-defined medium



StemFit

For Mesenchymal Stem Cell

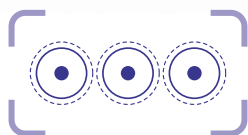
ITEM : Reagent (Culture Medium for Stem Cell)
ITEM code : A3
QTY : 500ml
LOT No. : 20190200A
EXP. : XX, Dec. 2019
STORE AT : -20°C

WARNINGS : Use immediately after thawing
and protect from exposure to direct light

WARNING
CONTAIN : 0.1% Ethanol
Flammable liquid
Keep away from heat/
sparks/open flames/
hot surfaces. No smoking.
CONTACT : AJINOMOTO CO., INC.
stemfit@ajinomoto.com



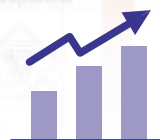
For Research Use ONLY
See Product Information and SDS for more information



High consistency



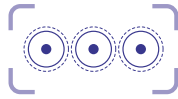
High safety



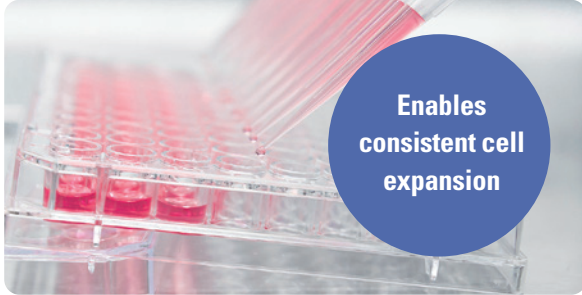
High performance



High consistency



Free of undefined components (Serum, hPL).
Chemically defined composition minimizes lot-to-lot variation and enables consistent cell expansion.



High Safety



Minimized risk of hazardous animal- and human-derived components. StemFit For MSC is designed in accordance with the BSE/TSE guideline (EMA/410/01 Rev.3). Any animal- and human-derived components are properly inactivated and the risk associated with the animal-derived ingredient is negligible.

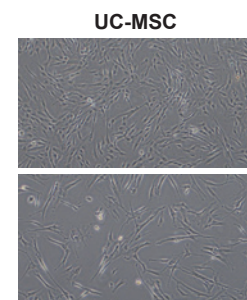
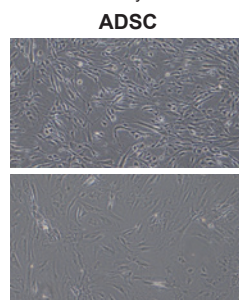
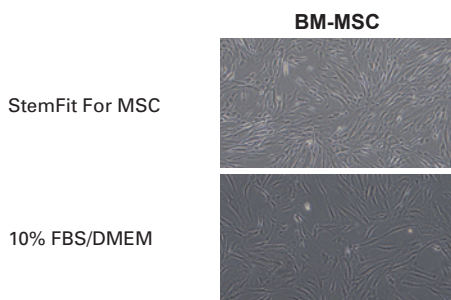
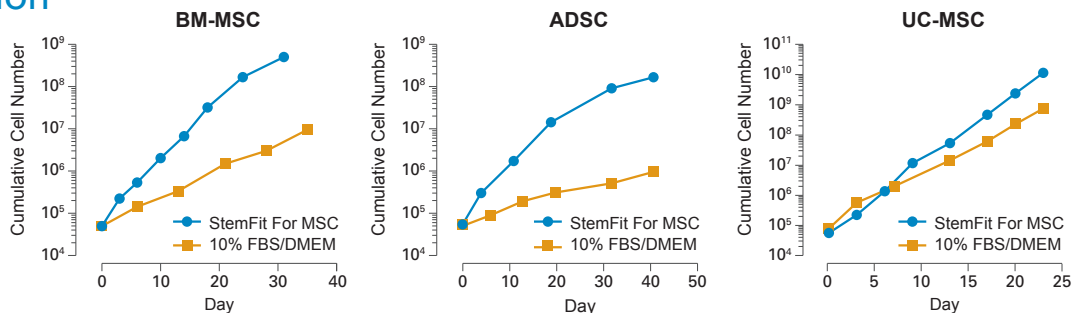


High performance



StemFit For MSC enables superior cell expansion compared to serum-containing media. This medium can maintain MSCs with high level of marker expression and differentiation potential.

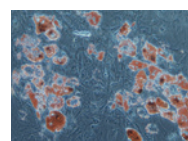
Expansion



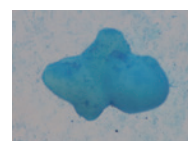
MSC marker expression

	positive marker			negative marker	
	CD73	CD90	CD105	CD34	CD45
BM-MSC	93.0	99.3	96.5	0.3	0.3
ADSC	100.0	100.0	98.3	2.6	0.1
UC-MSC	98.9	100.0	93.0	0.9	0.2

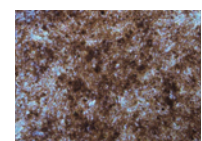
Differentiation potential



Adipocyte



Chondrocyte



Osteoblast

Eat Well, Live Well.



For further information, please contact here. ✉ stemfit@asv.ajinomoto.com

AJINOMOTO CO., INC. AminoScience Division <https://www.ajitrade.com/stemfit/>

15-1, Kyobashi 1-Chome, Chuo-Ku, Tokyo 104-8315, Japan